



GOOLF

BACK TO

Brands Featured:



GLENMUIR
1891

Brooks Koepka



SEE PAGES 4-9



SEE PAGES 10-13



UNDER ARMOUR

SEE PAGES 14-15



SEE PAGES 16-17



SEE PAGES 18-19

Browse our incredible selection of premium golfwear brands, to help elevate your wardrobe on the course.

Technical styles which have been created to stand the test of time and 'putt' the style back in your swing.



YOUR *WINNING*
GOLFWEAR
FORMULA



Dustin Johnson



Tiger Woods

PARTNER YOUR BRAND WITH



The recycled polyester used in Nike products begins as recycled plastic bottles, which are cleaned, shredded into flakes and converted into pellets. From there, the pellets are spun into new, high-quality yarn used in their products, delivering peak performance with a lower impact on the environment.



Black/White/
Sky Grey



Sky Grey/Obsidian/
White



White/Pure Platinum/
Black

DRI-FIT



Ribbed collar
to prevent
curling



100%
RECYCLED
POLYESTER

Double
knit fabric
in piqué
texture

NK293

Nike dry victory polo CB

100% Recycled polyester

S 35/37.5" **M** 37.5/41" **L** 41/44"

XL 44/48.5" **2XL** 48.5/53.5"

DRI-FIT



Black



College Navy



Game Royal



Photo Blue



University Blue



University Red



White

100%
RECYCLED
POLYESTER

NK295

Nike dry victory polo solid

100% Recycled polyester

S 35/37.5" **M** 37.5/41" **L** 41/44"

XL 44/48.5" **2XL** 48.5/53.5"

DRI-FIT



Nike Dri-FIT Technology is an innovative polyester fabric designed to help keep you dry so you can more comfortably work harder for longer. This unique high-performance microfibre construction supports the body's natural cooling system by wicking away sweat and dispersing it across the fabric's surface to evaporate faster.

FLEX CORE SHORTS AND TROUSERS

DRI-FIT



Multiple pockets offer easy storage
for your scorecard and tees.



Black/Black

NK316

Flex core shorts

96% Polyester, 4% Spandex

30" 32" 34" 36" 38"

DRI-FIT



Crafted from stretchy, sweat-wicking
fabric, the Nike Dri-FIT flex shorts let
you move in comfort.



Black/Black

NK315

Flex core pants

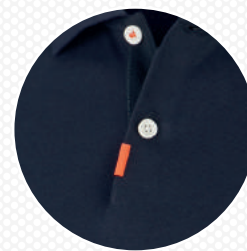
96% Polyester, 4% Spandex

30"* 32" 34" 36" 38"

*30" not available in long length

Leg length: Short 78cm, Regular 83cm,
Long 88cm

PREMIUM GOLF POLOS



Button and placket detail

High-quality piqué fabric
with a classic cotton look



Breathable construction
and Dri-FIT Technology give
it the fit and feel of your
favourite golf top



Black



Dark Grey/Heather



Obsidian



White

Dropped back hem with
side vents to allow you
to wear the polo untucked
for a more casual look

DRI-FIT



NK292

Nike polo slim
58/65% cotton, 35/42% polyester
S 35/37.5" **M** 37.5/41" **L** 41/44"
XL 44/48.5" **2XL** 48.5/53.5"

DRI-FIT



Nike Dri-FIT Technology is an innovative polyester fabric designed to help keep you dry so you can more comfortably work harder for longer. This unique high-performance microfibre construction supports the body's natural cooling system by wicking away sweat and dispersing it across the fabric's surface to evaporate faster.

DRI-FIT



Black/White/White



Blue Void/White/White



Sky Grey/White/White



University Red/White/White

NK181

The Nike polo golf stripe slim
65% Cotton, 35% Polyester

S 35/37.5" **M** 37.5/41" **L** 41/44" **XL** 44/48.5"
2XL 48.5/53.5"

DRI-FIT



Black/White/White



White/Black/Black



NK299

Women's Nike dry victory polo
100% Polyester

XS 8 **S** 10 **M** 12 **L** 14 **XL** 16

DRI-FIT



Black/White/Black



Blue Void/Sail/
Blue Void



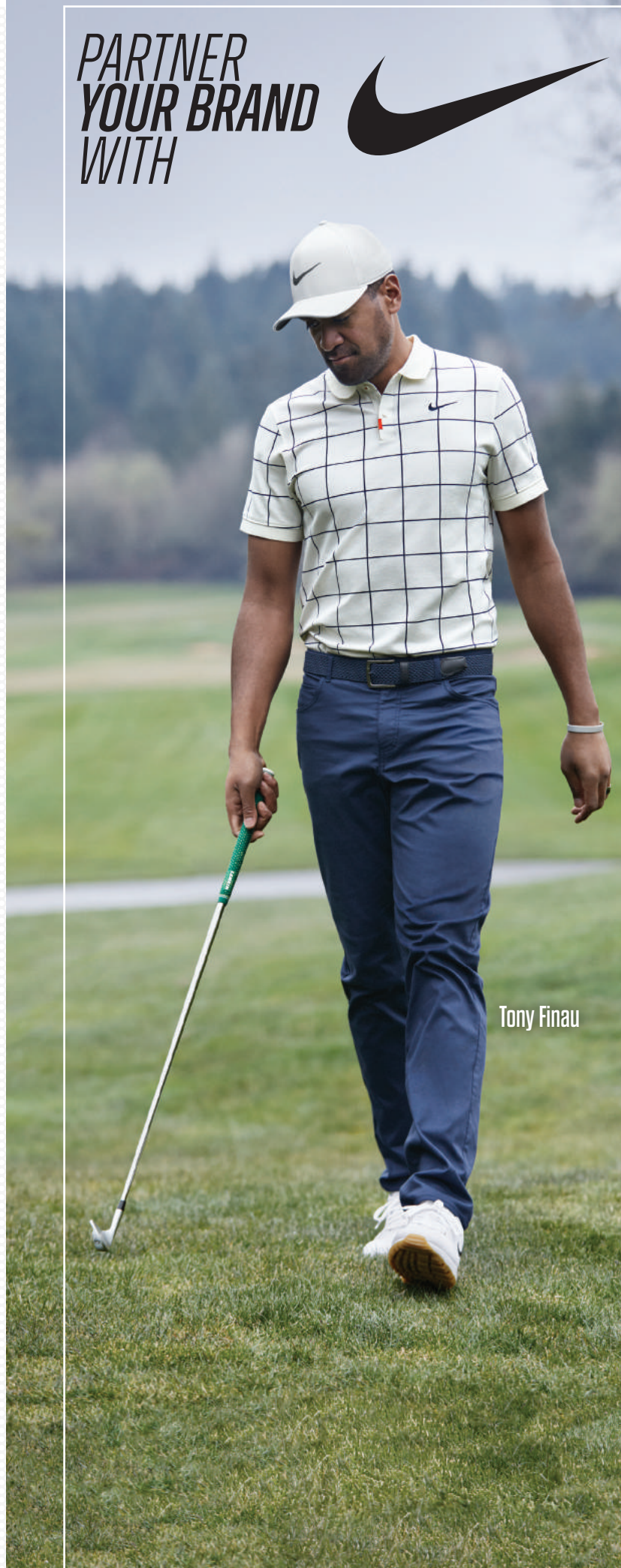
Habanero Red/
Blue Void/
Habanero Red

NK310

Dry vapor colour block polo
94% Polyester, 6% Spandex

S 37/39" **M** 39/41" **L** 41/43" **XL** 43/46"
2XL 46/49"

**PARTNER
YOUR BRAND
WITH**



Tony Finau



Rory McIlroy



Black



NK290

Nike repel jacket player
96% Nylon, 4% Spandex

S 35/37.5" **M** 37.5/41" **L** 41/44" **XL** 44/48.5"
2XL 48.5/53.5"



Black/Black/Black



Black/White/
Dark Grey



Obsidian/Obsidian/
Black



NK291

Nike dry top player half-zip
100% Polyester

S 35/37.5" **M** 37.5/41" **L** 41/44" **XL** 44/48.5"
2XL 48.5/53.5"

DRI-FIT



Black/Black/Black



Sky Grey/Gridiron/
Gridiron



NK296

Nike Shield crew core
100% Polyester

S 35/37.5" **M** 37.5/41" **L** 41/44" **XL** 44/48.5"
2XL 48.5/53.5"



Black



Obsidian



NK319

Dri-FIT player long sleeve golf crew
Body: 100% Polyester, Front panel: 90% Polyester, 10% Spandex. Rib: 93% Polyester, 7% Spandex

S 88/96cm **M** 96/104cm **L** 104/112cm
XL 112/124cm **2XL** 124/136cm

DRI-FIT



**PARTNER
YOUR BRAND
WITH**



LAYERING STYLES

**CAP
IT OFF**



Black/
Anthracite/
White

College Navy/
Anthracite/
White

Dark Grey/
Anthracite/
White

White/
Anthracite/
Black

NK188

Nike legacy 91 tech cap
100% Polyester

One size

DRI-FIT



Waterproof and windproof
coverage thanks to Nike
HyperShield fabric

Seam-sealed closures help
keep water out



Black/Black/
Black

NK313

Hypershield jacket convertible core
100% Polyester

S 37/39" **M** 39/41" **L** 41/43" **XL** 43/46"
2XL 46/49"



Ribbed fabric in high motion areas
gives you room to bend and swing

Ribbed mesh on the upper back
to vent out extra heat



Black/Dark Grey



Obsidian Blue/Diffused Blue



White/Sky Grey

NK182

Nike dry vapor top half-zip
96% Polyester, 4% Elastic

S 18.5/19.5" **M** 19.5/20.5" **L** 21/22"
XL 22/2.5" **2XL** 23/24.5"

DRI-FIT



**FINISH
THE LOOK**



Black/
Anthracite/
White



College Navy/
Anthracite/
White



Game Royal/
Anthracite/
White



University Red/
Anthracite/
Black



White/
Anthracite/
Black

NK187

Nike L91 cap tech custom
100% Polyester

One size

DRI-FIT



QUALITY POLOS

WITH



LOOK OUT FOR
PRIMEGREEN

A series of *high performance recycled materials* which represents adidas' commitment to phase out all virgin polyester by 2024 to help end plastic waste.

BREATHABLE

MOISTURE-WICKING



Moisture-wicking performance fabric

Branding on sleeve

Classic design polo shirt

Piqué-hydrophilic finish

A0001

adidas® Performance polo

Piqué -hydrophilic finish

S 34/37" **M** 37/40" **L** 40/44" **XL** 44/48"

2XL 48/52"



Black

Clear Sky

Collegiate Navy

Collegiate Red

Collegiate Royal

Green

Grey

Solar Pink

White



Black/Carbon

Grey/Red



White/Grey

White/Navy

AD115

2-colour stripe polo
100% PES piqué

S 34/37" **M** 37/40" **L** 40/44" **XL** 44/48"
2XL 48/52"



Black

Bright Orange



Collegiate Navy

Collegiate Red



Collegiate Royal

Green



Grey Three

White



AD036

Performance polo shirt
100% Polyester

XS 31/33" **S** 34/37" **M** 37/40" **L** 40/44"
XL 44/48" **2XL** 48/51"



Dustin Johnson

PREPARE TO **TEE OFF**



1/4 zip fastening for
venting in warmer temperatures

Lightweight, stretch fabric golf sweater



65% REC.PES, 35% PES
Double-knit-hydrophilic finish

**DESIGNED FOR
EASY-MOVING COMFORT**

AD033

Club 1/4 zip
65% REC.PES, 35% PES Double-knit-
hydrophilic finish

S 34/37" **M** 37/40" **L** 40/44"
XL 44/48" **2XL** 48/52"



Black



Navy



Red



White



BACK DETAIL

DESIGNED TO PERFORM

AD079

AD079

adidas® golf performance cap crestable
100% Polyester dobby
One size



UPF50+

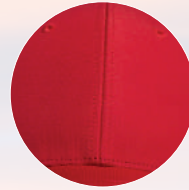
Pre-curved brim



Embroidered adidas® logo



Black Blue Grey Navy Red White



Six panel construction



Stretchy hook and loop adjustable back strap

CLIMACOOL TECHNOLOGY

AD077

Performance cap
100% Polyester
One size

RELAXED FIT



Amazon Black Bold Blue Power Red White

Climacool helps boost ventilation and give you the refreshing feeling of air on skin with moisture-absorbing properties allowing you to remain comfortable.

WATER-REPELLANT

UPF50+



Black Grey Four Hi Res Red Trace Royal White

AD078

Climacool tour crestable cap
100% Polyester
S/M L/XL

AVAILABLE IN 2 SIZES

KEEP YOUR FEET COMFORTABLE

MADE WITH PRIMEGREEN

This golf sock will give you great comfort and support during your round



Embroidered adidas® logo

Supportive mid-foot compression

AD041

adidas® 3-pack golf crew socks
81% Recycled polyester, 19% Elastane
6.5/8 8.5/11 12/14

Black/White/Grey

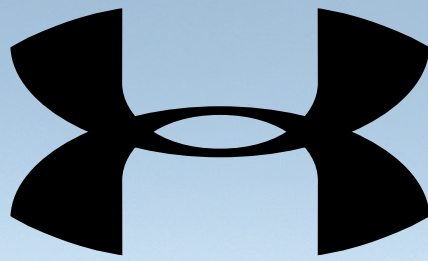


Embroidered adidas® logo

AD042

adidas® 3-pack golf ankle socks
81% Recycled polyester, 19% Elastane
6.5/8 8.5/11 12/14

Black/White/Grey



UNDER ARMOUR

ON COURSE CONTROL



UPF30+

MOISTURE-WICKING

Made from a piqué knit fabric

Academy/
Pitch Grey



Black/
Pitch Grey



Steel/
Black



White/
Pitch Grey



Smooth, soft anti-pick, anti-pill fabric has a textured snag-free finish, 4-way stretch construction, moves better in every direction

UA006

Performance polo textured 95% Polyester, 5% Elastane. Collar: 100% Polyester

S 34/36" **M** 38/40" **L** 42/44" **XL** 46/48"
2XL 50/52" **3XL** 54/56"

Anti-odour technology prevents the growth of odour-causing microbes

Fuller cut for complete comfort

Durable rib-knit collar



Built-in HeatGear® sweatband wicks away sweat to keep you cool and dry.

UA micro thread fabric uses re-engineered fibres designed to give superior stretch and breathability

100% POLYESTER

CLASSIC FIT

Structured front panels backed with foam padding for added comfort

Pre-curved visor and structured front panels



Back detail



Black/Black/White Graphite/Black/Black Midnight Navy/Graphite/White

UA013

Blitzing 3.0 Cap
100% Polyester
S/M M/L L/XL XL/2XL

Light, breathable Armour Fleece® with stretch for superior mobility



Black/Black

Generous 1/2 zip makes for easy layering, shaped hem for enhanced coverage

100% POLYESTER

Quick-drying, ultra-soft UA Tech™ fabric to keep you cool



MOISTURE-WICKING

UA019

Armour fleece half zip
Body: 100% Polyester
S 34/36" M 38/40" L 42/44" XL 46/48"
2XL 50/52" 3XL 54/56"

UA004

Tech™ 2.0 1/2 zip long sleeve
100% Polyester
S 34/36" M 38/40" L 42/44" XL 46/48"
2XL 50/52" 3XL 54/56"



Black/Charcoal Carbon Heather/Black

Anti-odour technology prevents the growth of odour-causing microbes
Dynamic arch support helps reduce foot fatigue
Strategic cushion reduces bulk, delivers flexibility and breathability
Mesh panels for added breathability

UA012

HeatGear® crews (pack of 3 pairs)
97% Polyester, 3% Spandex
M 36/42 L 43/47 XL 47/50



Black/Black/Steel

White/White/Steel



BRINGING FRESH, AUTHENTIC PERSPECTIVES TO THE GAME WE LOVE.

OPTI-DRI™

Technical fabric which helps to wick away moisture to keep you dry, creating a cooling effect to keep skin dry and comfortable.

Callaway Tour logo embroidered on the right sleeve in contrast colours

OPTI-DRI™
UV BLOCK

Self-collar and 3-button placket

Moisture-wicking and cooling technology to keep you dry and cool

OPTI-DRI™
UV BLOCK



CW031

Denim jacquard polo
100% Polyester

XS 33/35" **S** 36/38" **M** 39/41"
L 42/44" **XL** 45/47" **2XL** 48/50"



Caviar Navy (Medieval Blue) Sapphire (Spring Break)



Bright White Grey (Asphalt) Navy (Peacoat) Sky (Spring Break) Tango Red

CW025

Swing Tech™ solid polo
92% Polyester, 8% Spandex

XS 34/36" **S** 36/38" **M** 38/41" **L** 41/43"
XL 43/45" **2XL** 45/47"

STRETCH
SWING TECH™



CW027

Heathered jacquard polo
95% Polyester, 5% Elastane

S 36/38" **M** 39/41" **L** 42/44"
XL 45/47" **2XL** 48/50"



Black Heather Peacoat Heather

100%
MERINO WOOL
✓ THERMAL



CW076

Ribbed v-neck Merino sweater
100% Merino wool

S 38/40" **M** 42/44" **L** 46/48" **XL** 49/50"
2XL 50"



Black Onyx Peacoat Navy Surfing Blue

100%
MERINO WOOL
✓ THERMAL



CW075

Ribbed 1/4 zip Merino sweater
100% Merino wool

S 38/40" **M** 42/44" **L** 46/48"
XL 49/50" **2XL** 50"



Black Onyx Peacoat Navy Surfing Blue

OPTI-DRI™
✓ STRETCH
✓ THERMAL
✓ WATERPROOF



CW050

Corporate waterproof jacket
100% Polyester

S 36/38" **M** 39/41" **L** 42/44" **XL** 45/47"
2XL 48/50"



Black (Caviar) Navy (Peacoat)

✓ STRETCH
✓ SWING TECH™



CW078

Pieced waffle 1/4 zip pullover
95% Polyester, 5% Spandex

S 36/38" **M** 39/41" **L** 42/44"
XL 45/47" **2XL** 48/50"



Castle Rock Heather Caviar Peacoat

OPTI-DRI™
✓ STRETCH
✓ THERMAL
✓ WATERPROOF



CW051

Corporate waterproof trousers
100% Polyester

S 28/30" **M** 32/34" **L** 36/38" **XL** 40/42"
2XL 44/46"



Caviar

STRUCTURED CAP UPF30+



CW090

Side crested structured cap
100% Polyester

One size



Black Navy Red White



GLENMUIR 1891

OFFICIAL 2021 RYDER CUP MERCHANDISE



Breathable, shrink-resistant knitwear with anti-pill treatment, spun in Britain



Ascot Black Light Grey Marl Navy

GMOBI

g.Devon zip-neck cotton sweater (MKC7381ZN-DEV)
100% Cotton
S 38/40" **M** 40/42" **L** 42/44"
XL 46/48" **2XL** 48/50"



GMOIO

g.Lomond lambswool v-neck sweater (MKL5900VN-LOM)
100% Lambswool
S 38/40" **M** 40/42" **L** 42/44"
XL 46/48" **2XL** 48/50"



GMOII

g.Morar lambswool crew neck sweater (MKL5902CN-MOR)
100% Lambswool
S 38/40" **M** 40/42" **L** 42/44"
XL 46/48" **2XL** 48/50"



Black Bordeaux Bottle Charcoal Navy



Ascot Blue Black Bordeaux Bottle Charcoal Light Grey Marl Navy

MOISTURE-WICKING

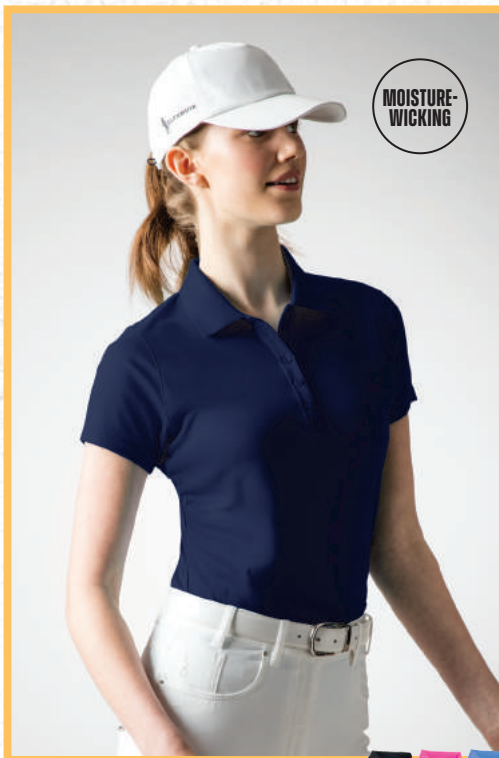


GM077

g.Deacon performance piqué plain polo shirt (MSP7373-DEAC)
100% Polyester
S 38/40" **M** 40/42" **L** 42/44" **XL** 46/48"
2XL 48/50"

GM027

g.Kinloch piqué polo shirt (MSC7211-KIN)
100% Combed cotton
S 38/40" **M** 40/42" **L** 42/44"
XL 46/48" **2XL** 48/50"



MOISTURE-WICKING



GM084

g.Paloma women's performance piqué shirt (LSP2540-PALO)
100% Performance polyester
S 32/34" **M** 36/38" **L** 38/40" **XL** 42/44"
2XL 46/48"

Black Hot Pink Light Blue Navy White



MOISTURE-WICKING



GM085

g.Ethan tipped polo shirt (MSP7422-ETH)
100% Performance polyester
S 38/40" **M** 40/42" **L** 42/44" **XL** 46/48"
2XL 48/50"



Black/White Garnet/White Navy/White White/Black White/Navy

ACCESSORIES

FOR THE COURSE

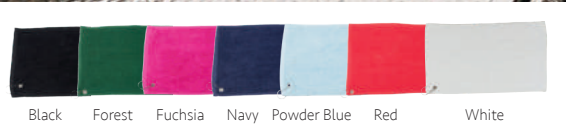
TOWEL CITY

100% RINGSPUN COTTON

TC013

Luxury range golf towel
100% Ringspun cotton
One size (30 x 50cm)

Luxury golf towel with soft, deep pile and excellent absorbency. Featuring a herringbone border with a convenient grommet and hanging loop.



TC033

Printable border golf towel
100% Cotton
One size (40 x 60cm)



100% COTTON

ARTG

This golf towel is made from 450grams Turkish cotton and is provided with a 8cm wide polyester SUBLI-Me® border which can be ideally sublimated.

100% COTTON

AR814

ARTG® SUBLI-Me® golf towel
100% Cotton. Border 100% Polyester
One size (30 x 50cm)



Anthracite Grey Black Dark Green French Navy Graphite

ki.mood



K1003

Golf umbrella
210T Polyester

One size. Height 105cm Approx diameter 100cm



Black Black/Burnt Lime Black/Orange Black/Red Bottle Green Burnt Lime Navy



Orange Red Royal Blue Sky Blue Slate Grey True Yellow White

QUADRA®



Black

QD360

Pro golf umbrella
Polyester pongee

One size (133cm diameter)



Leakproof puff valve spout provides a quick flow of water for instantaneous hydration and prevents leaking when not in use.

Strategically placed grip and ergonomic bottle design allow for easy handling.



Anthracite/Black/White Clear/Black/Black Game Royal/Black/White University Red/Black/White

NK406

Hyper fuel water bottle 32oz
69% LDPE, 19% TPE, 19% PP, 1% Si valve

One size



Atomic Green/Atomic Green/Black Black/Black/White Clear/Black/Black Clear/Game Royal/Game Royal Clear/Pink Pow/Pink Pow Clear/Pink Rise/Pink Rise



Clear/Rush Orange/Black Pink Pow/Pink Pow/White Rush Orange/Rush Orange/Black Sport Red/Sport Red/White White/Black/Sport Red

NK410

Big mouth bottle 2.0 - 22oz
73% Low-density polyethylene, 23% Polypropylene, 4% Silicone

One size

A professional golfer, Dustin Johnson, is captured in the middle of a golf swing on a green. He is wearing a light blue polo shirt, dark blue trousers, and a white cap with 'TPC' and 'TPC' logos. The background features lush green trees and a clear blue sky. In the top left corner, there are decorative horizontal lines: a yellow one, a white one, and three small dots (white, yellow, white).

Dustin Johnson

ENQUIRE FOR MORE DETAILS

